



Cornwall Gardens, SW7

£5,395,000

3 bedroom maisonette for sale

Sold

Description

A stunning, newly refurbished first and second floor 3 double bedroom maisonette on the favoured North Terrace of this popular garden square facing South over communal gardens. The apartment is located on the West corner of Launceston Place and benefits from a triple aspect and an abundance of natural light, a 22 foot decked roof terrace, a South facing front balcony and access to communal gardens.

Material Information

Tenure: Share of Freehold



Cornwall Gardens, SW7

Approximate Gross Internal Area
1948 sq ft / 181 sq m

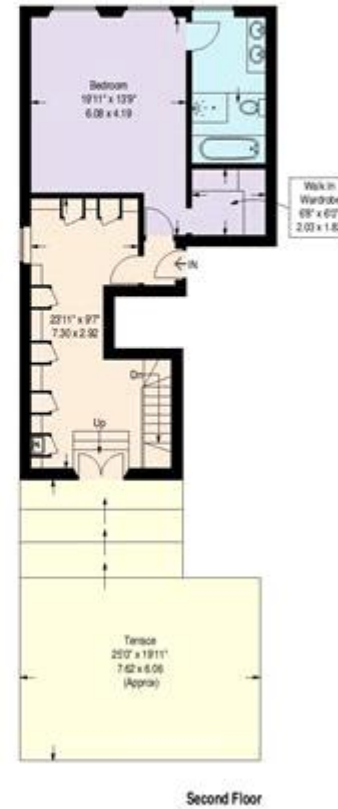


Illustration for identification purposes only, measurements are approximate, not to scale



Energy Efficiency Rating		Environmental Impact (CO ₂) Rating	
	Current	Potential	
Very energy efficient - lower running costs			Very environmentally friendly - lower CO ₂ emissions
(92-100) A			(92-100) A
(81-91) B			(81-91) B
(69-80) C			(69-80) C
(55-68) D			(55-68) D
(39-54) E			(39-54) E
(21-38) F			(21-38) F
(1-20) G			(1-20) G
Not energy efficient - higher running costs			Not environmentally friendly - higher CO ₂ emissions
England & Wales		58 60	England & Wales
EU Directive 2002/91/EC			EU Directive 2002/91/EC
The energy efficiency rating is a measure of the overall efficiency of a home. The higher the rating the more energy efficient the home is and the lower the fuel bills will be.			The environmental impact rating is a measure of a home's impact on the environment in terms of carbon dioxide (CO ₂)

Viewing by appointment only
Milton Stone - Head Office
53 Abingdon Road, London W8 6AN
Tel: 0207 938 2311 Email: sm@miltonstone.com Website: <http://www.miltonstone.com>

