



# Bonchurch Road

£895 pw

3 bedroom flat to rent

## Description

A fabulous 3-bedroom maisonette on the raised ground and lower ground floors of this converted period building.

This bright, spacious and well-presented apartment benefits from open-plan living space with high ceilings, a private rear garden, ample storage and is ready for immediate occupation.

Bonchurch Road is in the Royal Borough of Kensington and Chelsea and just a short walk from the extensive restaurants and shops of Golborne Road and Portobello Road.

Council Tax Band: D

Deposit: £4,475

Holding Deposit: £895



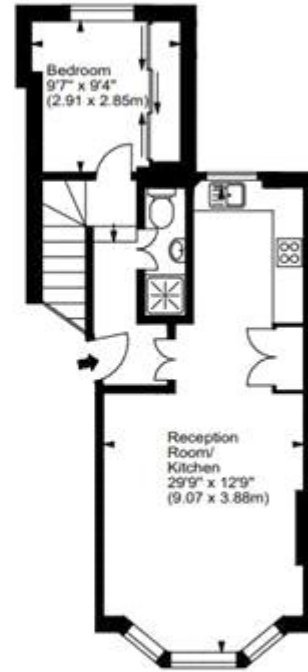
# Bonchurch Road, W10



Approx. Gross Internal Area  
863 Sq Ft - 80.17 Sq M



Lower Ground Floor



Raised Ground Floor

For illustration purposes only. Not to scale.  
All measurements are taken and shown at floor level.  
[www.r3photography.co.uk](http://www.r3photography.co.uk) © Photography / Floor Plans / Lease Plans / EPCs





Energy Efficiency Rating		
	Current	Potential
Very energy efficient - lower running costs		
(92-100) <b>A</b>		
(81-91) <b>B</b>		
(69-80) <b>C</b>		<b>76</b>
(55-68) <b>D</b>	<b>63</b>	
(39-54) <b>E</b>		
(21-38) <b>F</b>		
(1-20) <b>G</b>		

Viewing by appointment only  
 Milton Stone - Head Office  
 53 Abingdon Road, London W8 6AN  
 Tel: 0207 938 2311 Email: [lh@miltonstone.com](mailto:lh@miltonstone.com) Website: <http://www.miltonstone.com>