



10

ALMA
SQUARE **NWB**
LEADING TO HANFORD GARDENS
STREET BY WESTMINSTER

MILTON
STONE

Alma Square, London

£4,850,000

5 bedroom house for sale

Description

A stunning, newly refurbished five-bedroom family home with direct access to the only private communal gardens in St Johns Wood. This bright and spacious end-of-terrace house features a kitchen/dining/family room leading to a private patio garden, a 35 ft double reception room, 2 cloakrooms and two separate entrances. Alma Square is a short walk from St Johns Wood Underground Station (Jubilee Line) and the restaurants and boutique shops of St Johns Wood High Street.

Disclaimer: A director of Milton Stone has an interest in this property.

Material Information



Alma Square, NW8

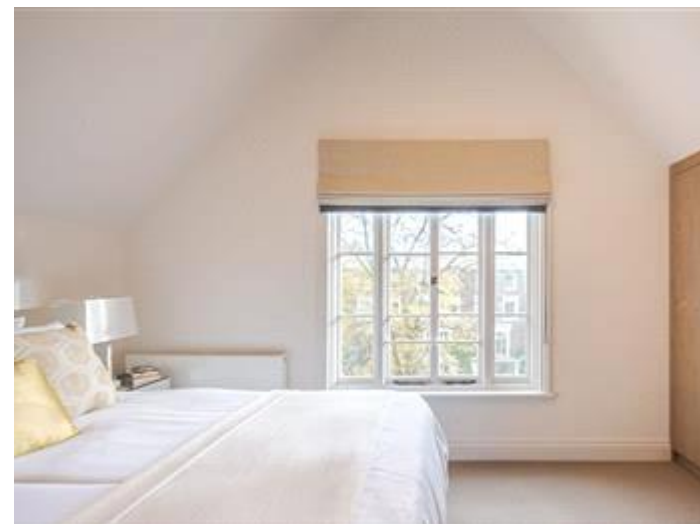


Approx. Gross Internal Area
2861 Sq Ft - 265.79 Sq M



For illustration purposes only. Not to scale.
All measurements are taken and shown at floor level.
www.r3photography.co.uk © Photography / Floor Plans / Lease Plans / EPCs





Energy Efficiency Rating		
	Current	Potential
Very energy efficient - lower running costs		
(92-100) A		
(81-91) B		
(69-80) C	75	80
(55-68) D		
(39-54) E		
(21-38) F		
(1-20) G		

Viewing by appointment only
Milton Stone - Head Office
53 Abingdon Road, London W8 6AN
Tel: 0207 938 2311 Email: sm@miltonstone.com Website: <http://www.miltonstone.com>